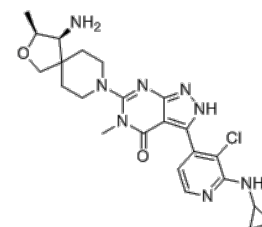


Product Name : SHP389
Cat. No. : PC-36050
CAS No. : 2235394-90-6
Molecular Formula : C₂₃H₂₉ClN₈O₂
Molecular Weight : 484.989
Target : Protein Phosphatase/PTP
Solubility : 10 mM in DMSO



Biological Activity

SHP389 (SHP-389, SHP 389) is a novel potent, selective, allosteric **SHP2** inhibitor with IC₅₀ of 36 nM, shows with impressive hERG selectivity (IC₅₀>30 uM).

SHP389 inhibits p-ERK in KYSE-520 cells with IC₅₀ of 36 nM, and shows antiproliferation effect with IC₅₀ of 0.36 uM.

SHP389 demonstrated a moderate-high clearance (~83% hepatic extraction) which was under predicted in vitro by rat liver microsomes (Cl= 26.1 uL/min/mg, T_{1/2} = 53.2 min) assuming a hepatic blood flow of 55 mL/min/kg.

SHP389 also showed low oral bioavailability (~2 %F).

References

Bagdanoff JT, et al. *J Med Chem.* 2019 Feb 8. doi: 10.1021/acs.jmedchem.8b01725.

Caution: Product has not been fully validated for medical applications. Lab Use Only!

E-mail: tech@probechem.com